

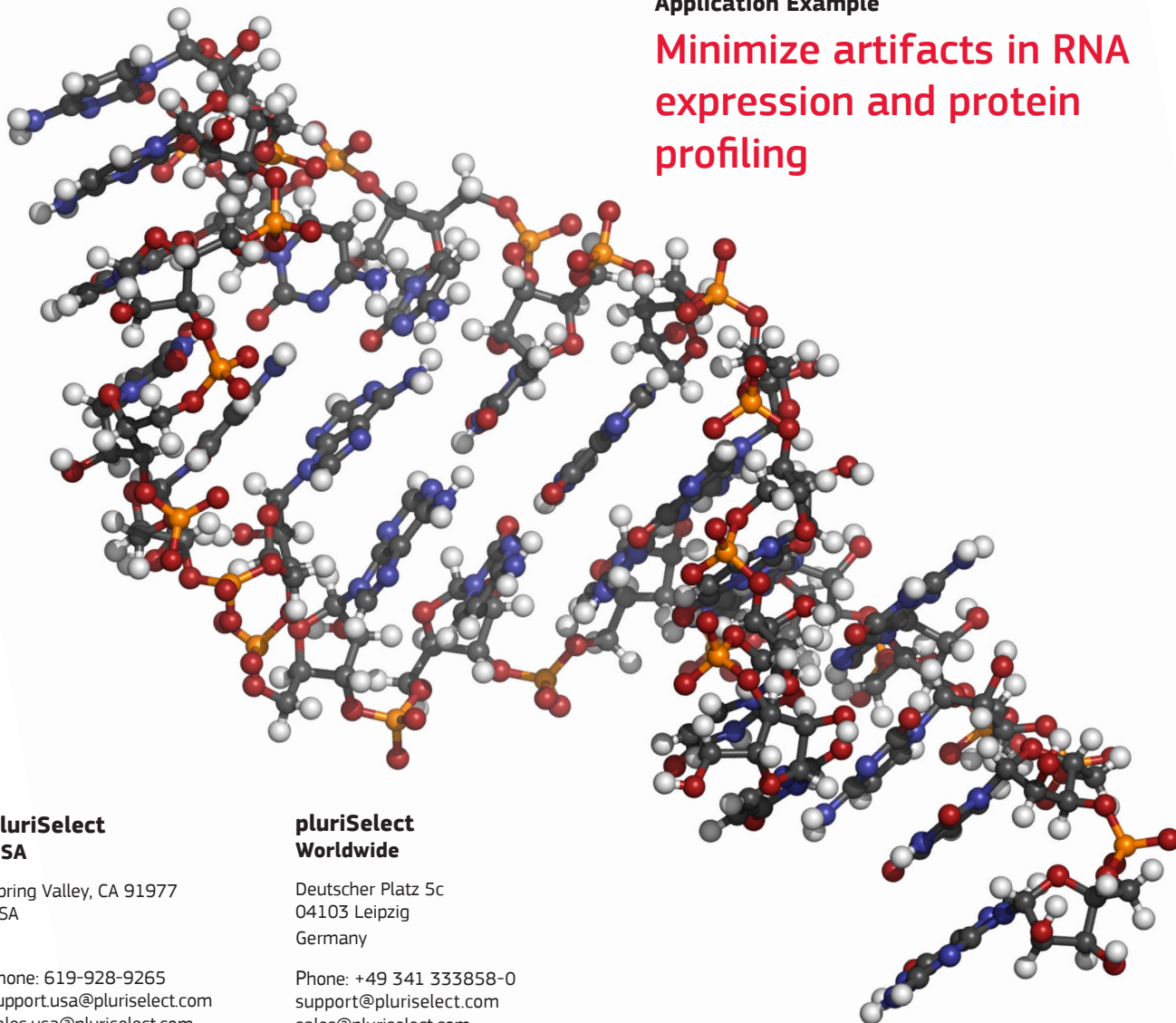


*FAST, EASY, GENTLE!*

# pluriBead®

**Application Example**

**Minimize artifacts in RNA  
expression and protein  
profiling**



**pluriSelect  
USA**

Spring Valley, CA 91977  
USA

Phone: 619-928-9265  
support.usa@pluriselect.com  
sales.usa@pluriselect.com

[www.pluriselect.com](http://www.pluriselect.com)

**pluriSelect  
Worldwide**

Deutscher Platz 5c  
04103 Leipzig  
Germany

Phone: +49 341 333858-0  
support@pluriselect.com  
sales@pluriselect.com

V 1.0

 **pluriSelect**

# Minimize artifacts in RNA expression and protein profiling

## Introduction

Current cell separation methods can take up to two hours and need multiple centrifugation steps and temperature shifts.

With the pluriBead® kits, you can isolate specific cell types directly from whole blood. You can work at room temperature (and even at 37°C) without centrifugation and stabilize the RNA and proteins in less than 10 minutes. This will minimize the artifacts in your analysis.

## Tested lysis buffers

Trizol®, Qiagen RLT® buffer, Promega lysis buffer, Invitex cell lysis buffer, Ambion lysis buffer, PAXgene® and RNAlater®.

## What is different to standard cell separation with pluriBead®?

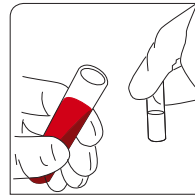
If you want to use your target cells for RNA expression analysis, you don't need to detach them from the pluriBead® particles. Simply add a suitable lysing buffer and follow the protocol for your downstream experiment.

Use a pluriBead® kit to get started.

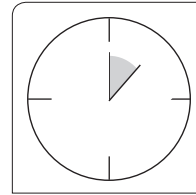
	Magnetic separation	pluriBead®
Application in whole blood	+/-	Yes
Specific cell isolation	Yes	Yes
Pre-treatment of whole blood	Yes	No
Time to receive lysed cells	30 - 120 minutes	<10 minutes
Centrifugation steps	1 - 7	0
Isolation of exosomes	No	Yes
Gentle use at room temperature or 37°C	No	Yes

► *Less than 10 minutes needed for isolated and lysed cells. See video tutorial on our website: [www.pluriselect.com](http://www.pluriselect.com)*

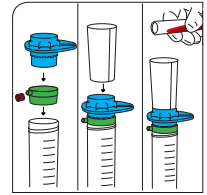
## Protocol for pluriBead® cell isolation with subsequent RNA stabilization



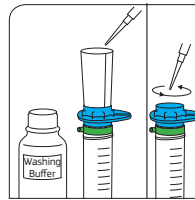
Add pluriBead® to your sample



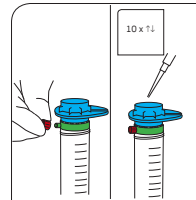
Incubate 4 - 6 minutes



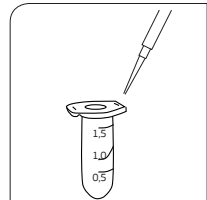
Add sample onto separation device



Wash and discard funnel, wash pluriStrainer®



Close Luer-Lock and add lysis buffer



Transfer lysed cells into tube

## Figures

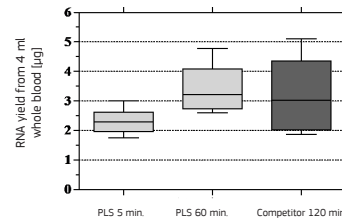


Fig. 1

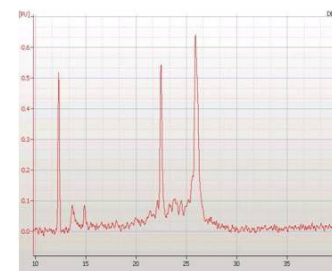


Fig. 2

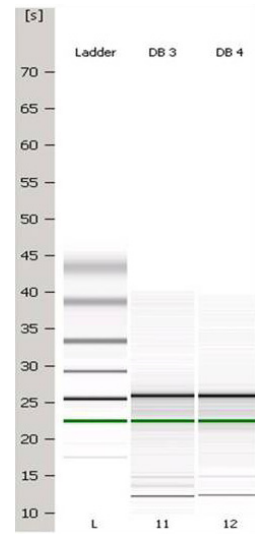


Fig. 3

Fig. 1: Comparison of pluriSelect® (PLS) with column technology  
 Fig. 2: Agilent® RNA integrity analysis  
 Fig. 3: Agilent® RNA integrity analysis